



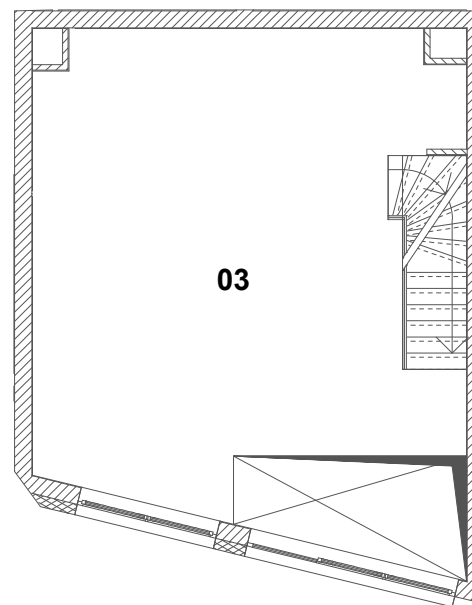
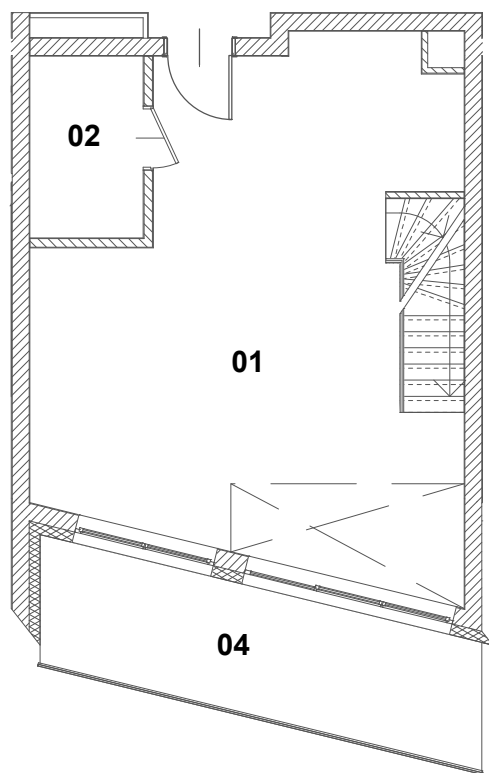
LOKAL MIESZKALNY

NR 04.09

IV PIĘTRO

ZESTAWIENIE POWIERZCHNI

| | |
|------------------------------|---------------------|
| 1. POKÓJ Z ANEKSEM KUCHENNYM | 38,17m ² |
| 2. ŁAZIENKA | 4,03m ² |
| 3. ANTRESOLA | 38,22m ² |
| SUMA | 80,42m ² |
| 4. BALKON | 11,09m ² |



SKALA 1:100