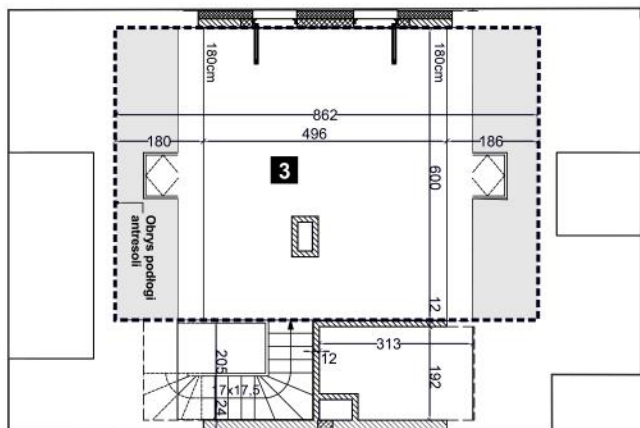
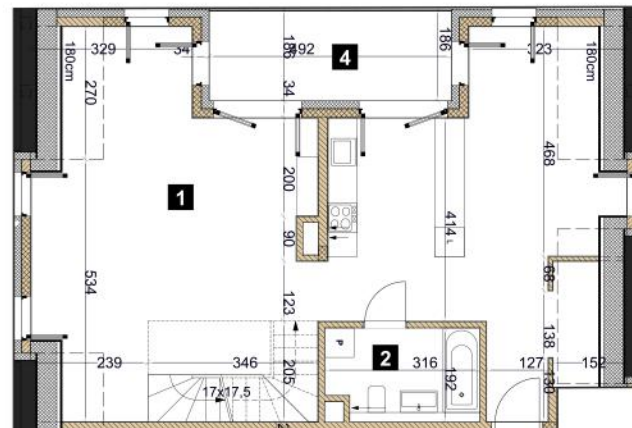




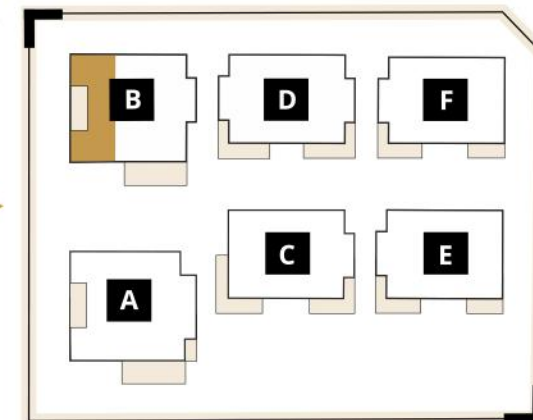
ANTRESOLA



POZIOM I



WJAZD



WEJŚCIE

## B2.1

budynek: B

piętro: 2

liczba pokoi: 1

powierzchnia: 102,62 m<sup>2</sup>

1. Pokój z aneksem	67,84 m <sup>2</sup>
2. Łazienka	5,62 m <sup>2</sup>
3. Antresola	29,16 m <sup>2</sup>
<b>Powierzchnia</b>	<b>102,62 m<sup>2</sup></b>
4. Loggia	9,15 m <sup>2</sup>

