



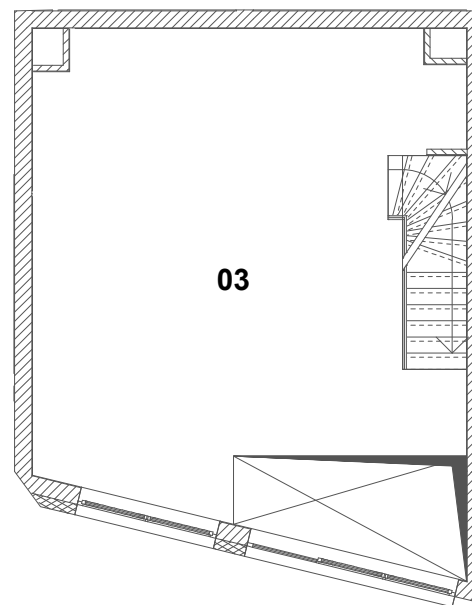
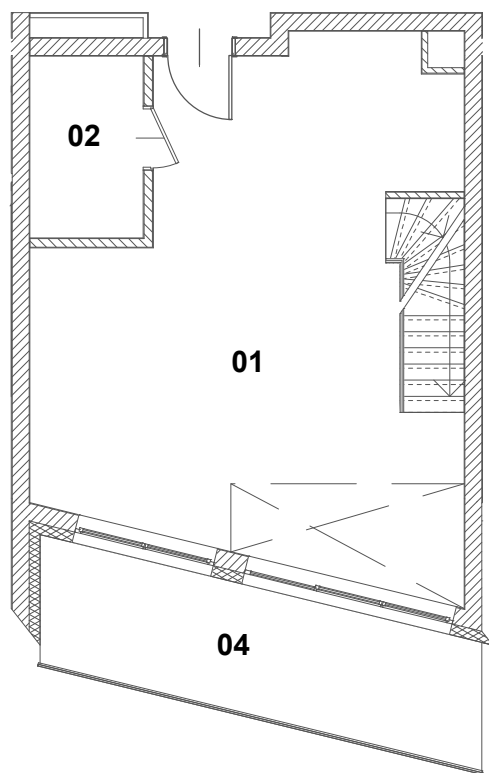
LOKAL MIESZKALNY

NR 04.06

IV PIĘTRO

ZESTAWIENIE POWIERZCHNI

| | |
|------------------------------|---------------------|
| 1. POKÓJ Z ANEKSEM KUCHENNYM | 38,11m ² |
| 2. ŁAZIENKA | 4,09m ² |
| 3. ANTRESOLA | 38,41m ² |
| SUMA | 80,61m ² |
| 4. BALKON | 11,09m ² |



SKALA 1:100

