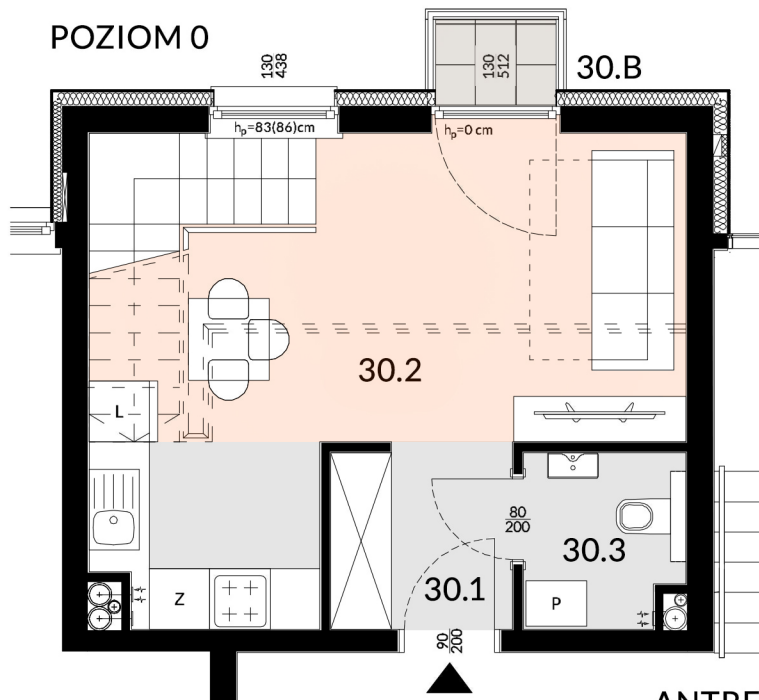
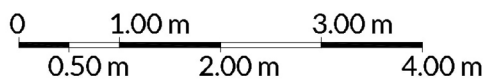
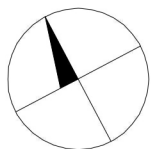
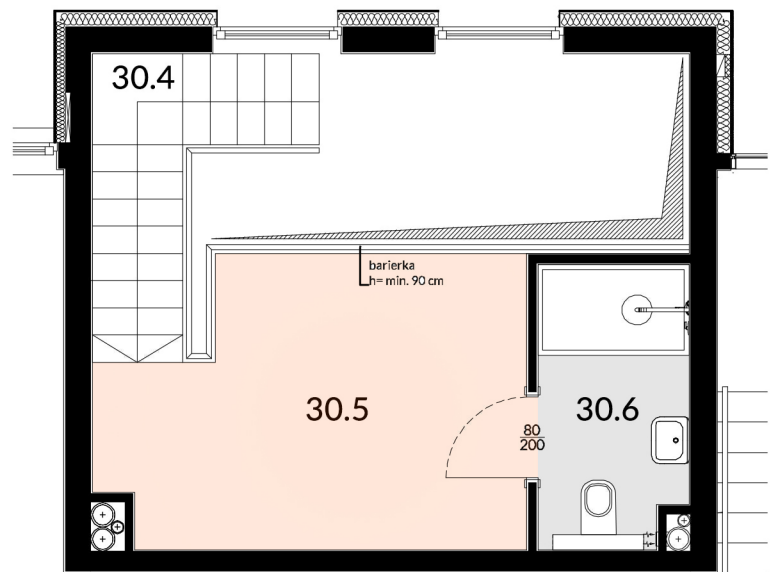


POZIOM 0



ANTRESOLA (+ 2,80 m)



MIESZKANIE NR 30

jednopokojowe z antresolą

ZESTAWIENIE POWIERZCHNI UŻYTKOWEJ

| | | |
|-------------|---------------------------|----------------------------|
| 30.1 | Hall | 3,28 m ² |
| 30.2 | Salon z aneksem kuchennym | 19,03 m ² |
| 30.3 | WC | 2,67 m ² |
| 30.4 | Schody | 3,97 m ² |
| 30.5 | Antresola | 11,11 m ² |
| 30.6 | Łazienka 1 | 4,10 m ² |
| SUMA | | 44,16 m² |
| 30.B | Balkon | 0,88 m ² |

IV PIĘTRO

