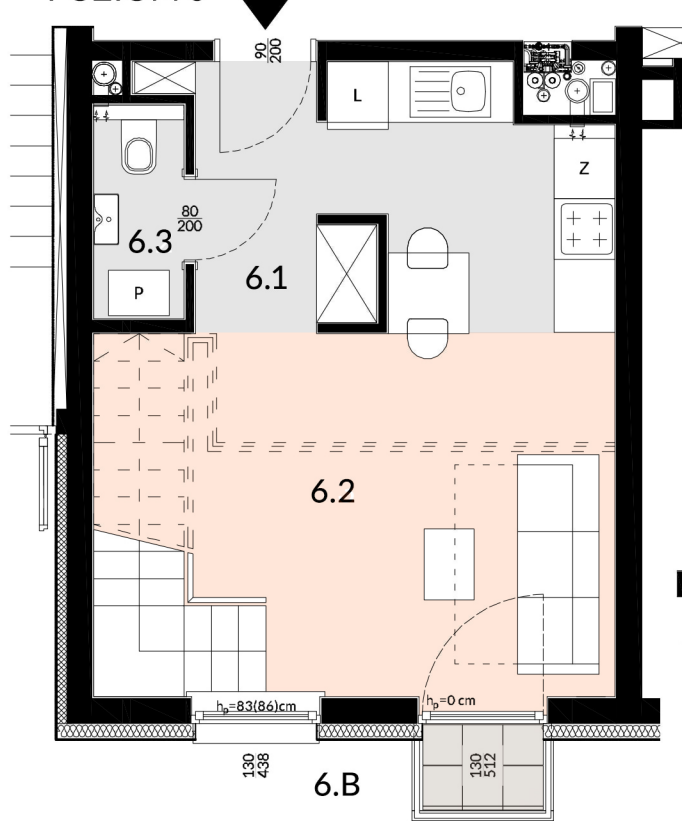
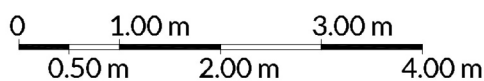
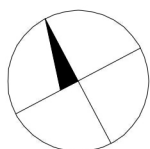
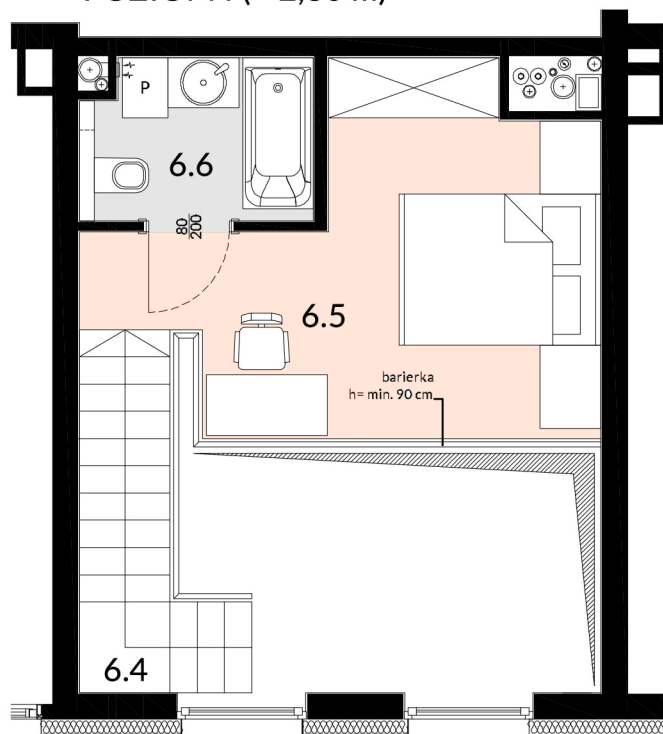


POZIOM 0



POZIOM I (+ 2,80 m)



MIESZKANIE NR 6

dwupoziomowe

ZESTAWIENIE POWIERZCHNI UŻYTKOWEJ

| | | |
|-------------|---------------------------|----------------------------|
| 6.1 | Hall | 4,02 m ² |
| 6.2 | Salon z aneksem kuchennym | 21,87 m ² |
| 6.3 | WC | 1,91 m ² |
| 6.4 | Schody | 3,97 m ² |
| 6.5 | Sypialnia | 13,32 m ² |
| 6.6 | Łazienka | 3,60 m ² |
| SUMA | | 48,69 m² |
| 6.B | Balkon | 0,88 m ² |

PARTER

