

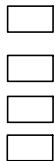
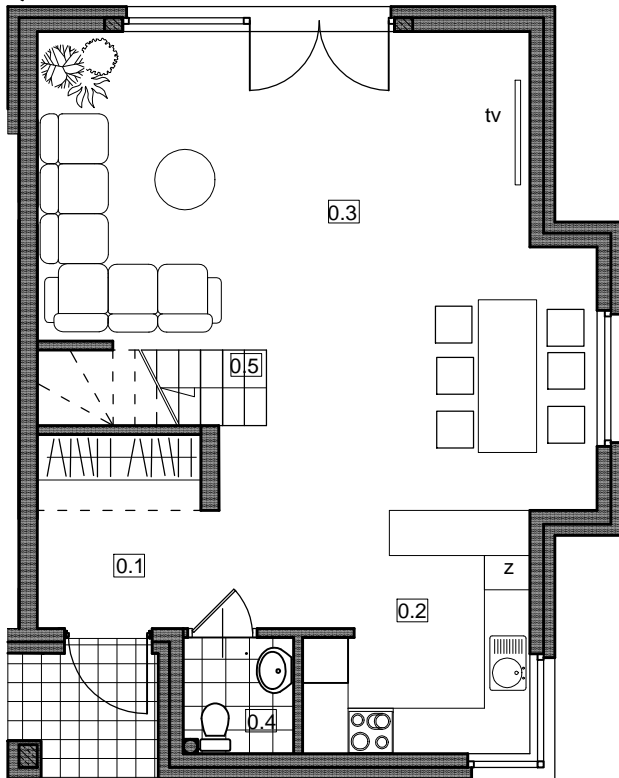


# LOKAL 2-B

pow. użytkowa 141,98m<sup>2</sup>



## PARTER



PARTER -59,96m<sup>2</sup>

0.1	HOL WEJŚCIOWY
8,40m <sup>2</sup>	gres
0.2	KUCHNIA
8,34m <sup>2</sup>	gres
0.3	POKÓJ DZIENNY
38,10m <sup>2</sup>	panele
0.4	W.C.
2,12m <sup>2</sup>	gres
0.5	SCHODY
3,00m <sup>2</sup>	panele

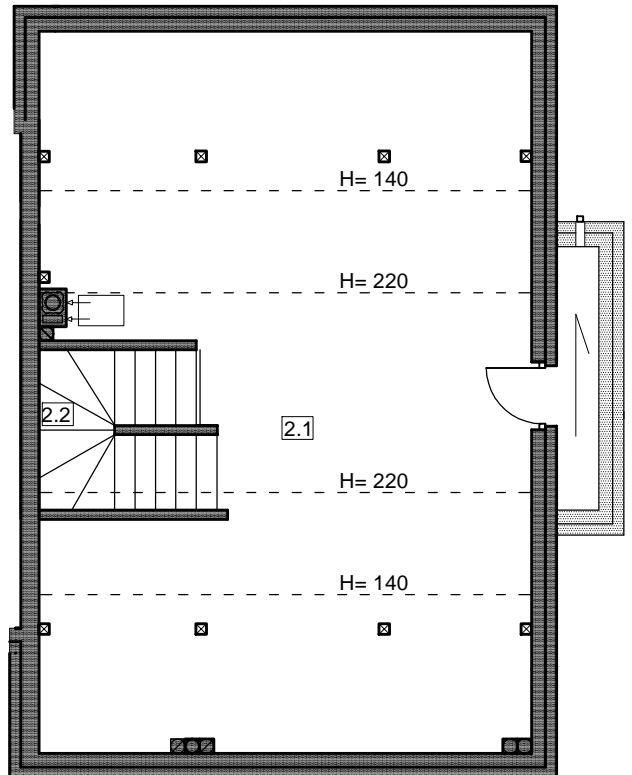
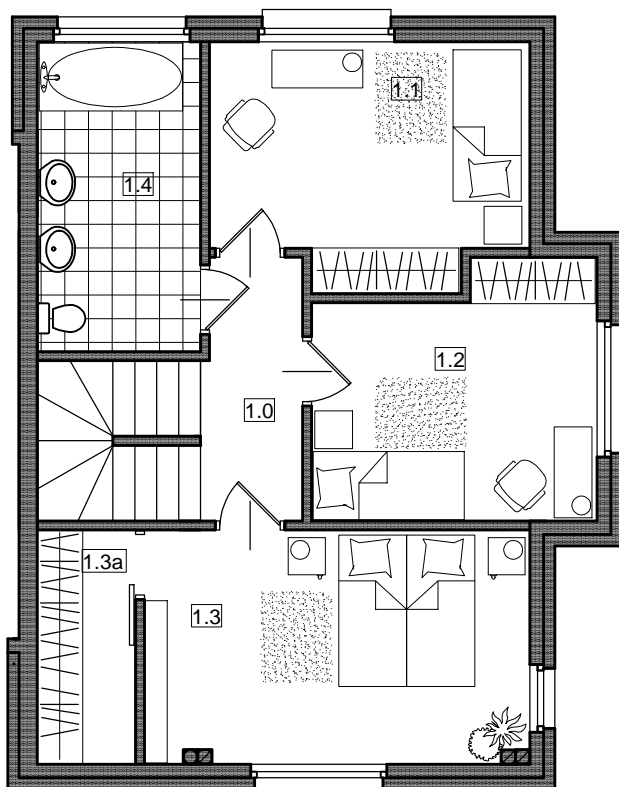
PIĘTRO -56,62m<sup>2</sup>

1.0	HOL
4,47m <sup>2</sup>	panele
1.1	POKÓJ
12,53m <sup>2</sup>	panele
1.2	POKÓJ
11,69m <sup>2</sup>	panele
1.3	POKÓJ
15,38m <sup>2</sup>	panele
1.3a	GARDEROBA
3,89m <sup>2</sup>	panele
1.4	ŁAZIENKA
8,66m <sup>2</sup>	gres

PODDASZE -25,40m<sup>2</sup>

2.1	PODDASZE
20,90m <sup>2</sup>	panele
2.2	SCHODY
4,50m <sup>2</sup>	panele

## PIĘTRO



PODDASZE

