



# lokal 18B

## DANE

 89,9 m<sup>2</sup>

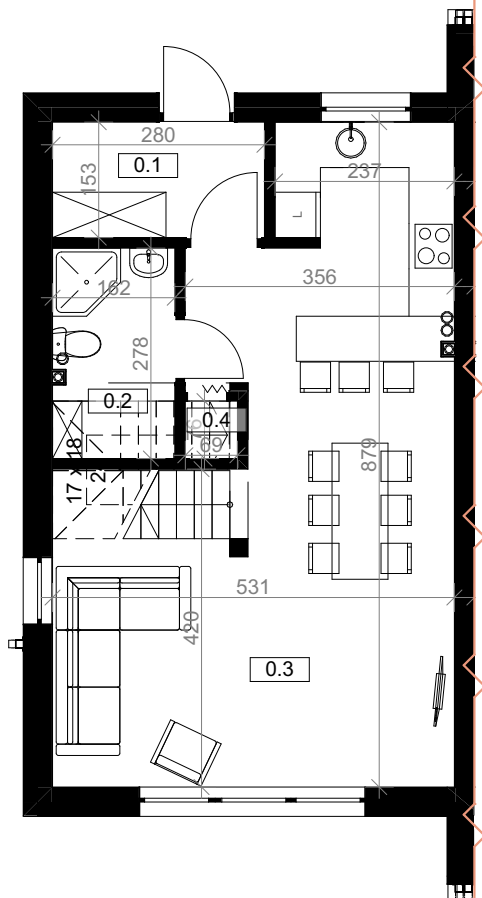
 143,4 m<sup>2</sup>

 204,7 m<sup>2</sup>

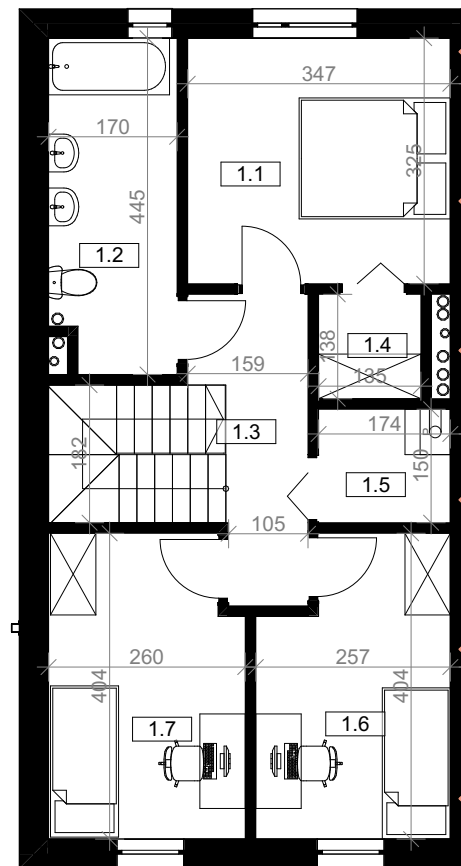
## POWIERZCHNIE

UŻYTKOWA    PODŁOGI

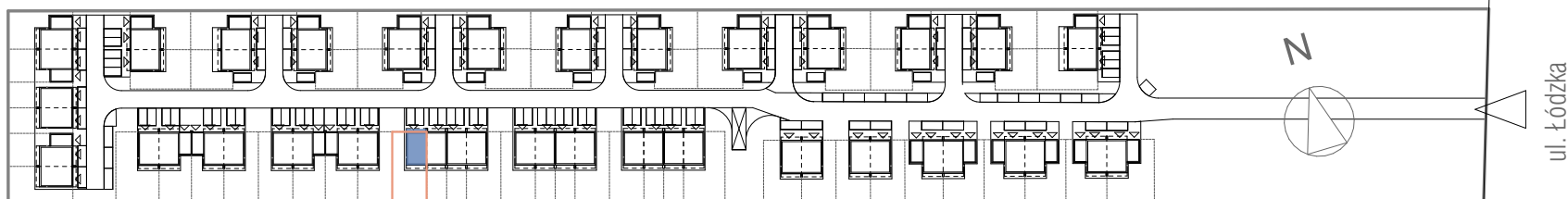
0.1 KOMUNIKACJA	4,3	4,3
0.2 ŁAZIENKA	3,7	4,5
0.3 SALON + KUCHNIA	33,7	35,6
0.4 P.G.	0,5	0,5
	42,2 m <sup>2</sup>	44,9 m <sup>2</sup>
1.1 SYPIALNIA	11,3	11,3
1.2 ŁAZIENKA	7,3	7,3
1.3 KOMUNIKACJA	5,0	5,0
1.4 GARDEROBA	1,9	1,9
1.5 POM. GOSP.	2,6	2,6
1.6 POKÓJ	9,5	9,5
1.7 POKÓJ	10,1	10,1
	47,7 m <sup>2</sup>	47,7 m <sup>2</sup>
	89,9 m <sup>2</sup>	92,6 m <sup>2</sup>



RZUT PARTERU




RZUT PIĘTRA



 **DPM INVEST**  
domy pod miastem

 kontakt@dpminvest.pl

 500 877 450

 697 600 760

# FAMILY PARK