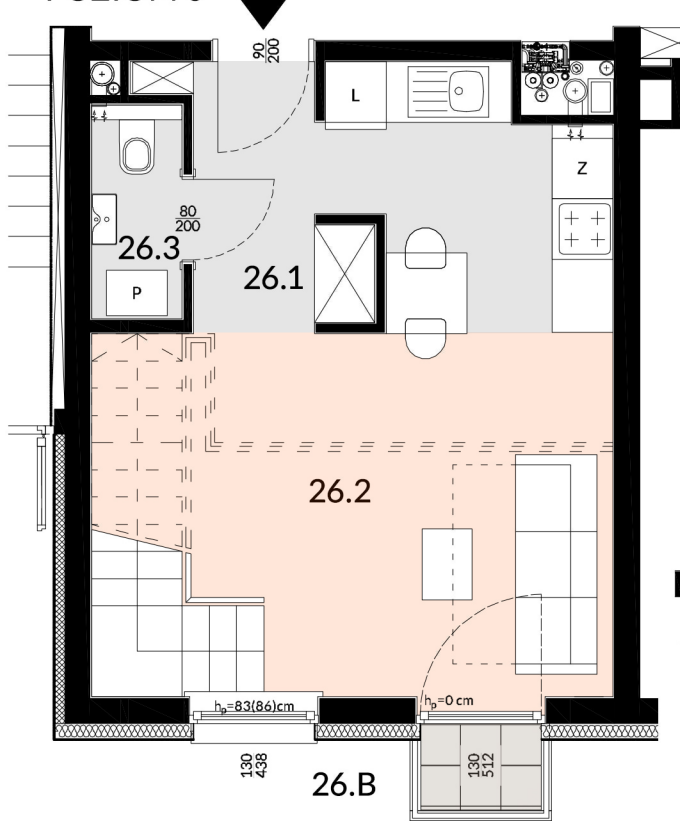
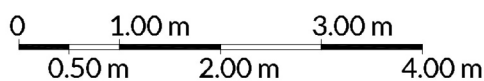
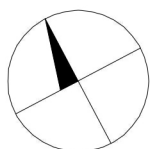
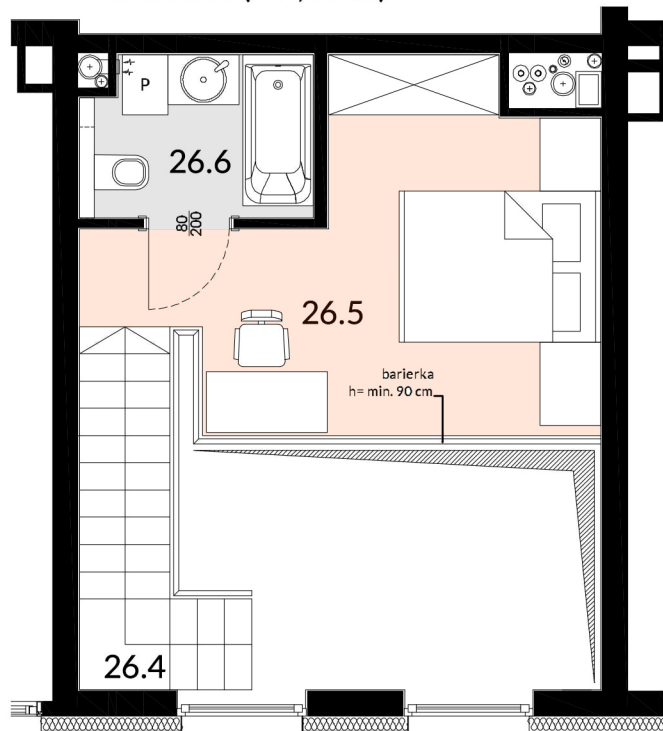


POZIOM 0



POZIOM I (+ 2,80 m)



### MIESZKANIE NR 26

dwupoziomowe

#### ZESTAWIENIE POWIERZCHNI UŻYTKOWEJ

26.1	Hall	4,02 m <sup>2</sup>
26.2	Salon z aneksem kuchennym	21,87 m <sup>2</sup>
26.3	WC	1,91 m <sup>2</sup>
26.4	Schody	3,97 m <sup>2</sup>
26.5	Sypialnia	13,32 m <sup>2</sup>
26.6	Łazienka	3,60 m <sup>2</sup>
<b>SUMA</b>		<b>48,69 m<sup>2</sup></b>
26.B	Balkon	0,88 m <sup>2</sup>

IV PIĘTRO

