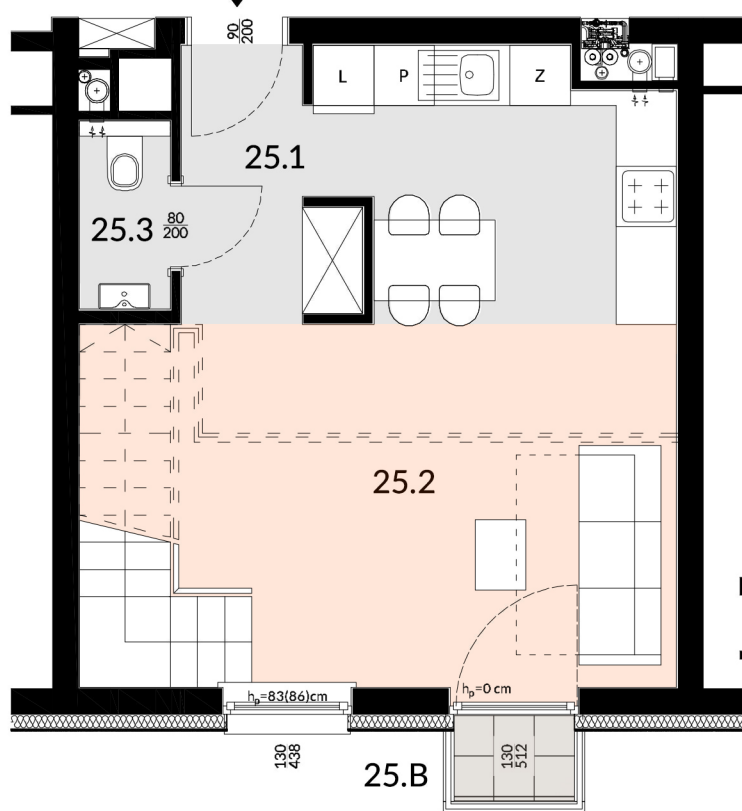
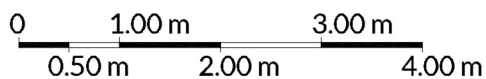
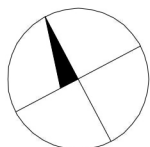
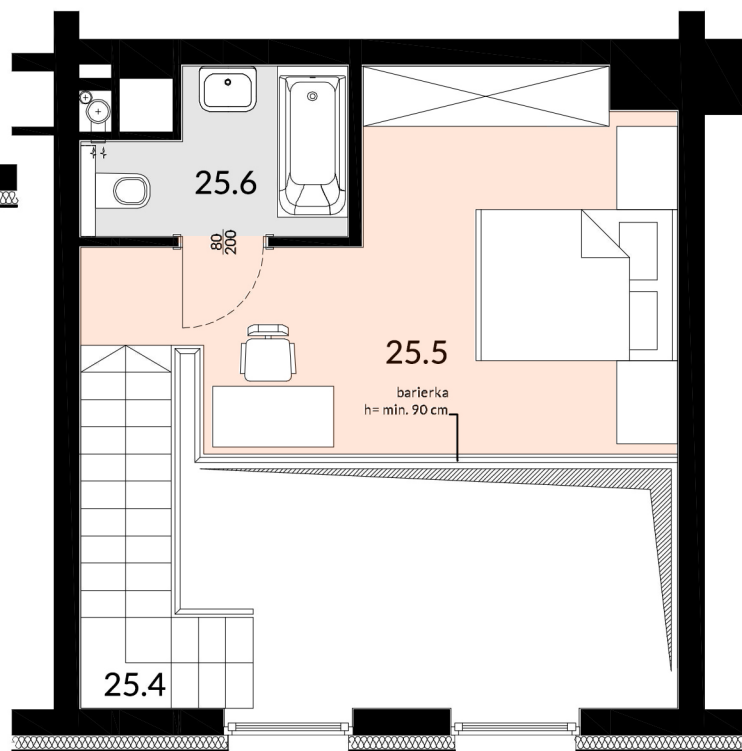


POZIOM 0



POZIOM I (+ 2,80 m)



MIESZKANIE NR 25

dwupoziomowe

ZESTAWIENIE POWIERZCHNI UŻYTKOWEJ

| | | |
|-------------|---------------------------|----------------------------|
| 25.1 | Hall | 4,05 m ² |
| 25.2 | Salon z aneksem kuchennym | 26,86 m ² |
| 25.3 | WC | 1,68 m ² |
| 25.4 | Schody | 3,97 m ² |
| 25.5 | Sypialnia | 16,13 m ² |
| 25.6 | Łazienka | 3,72 m ² |
| SUMA | | 56,41 m² |
| 25.B | Balkon | 0,88 m ² |

IV PIĘTRO

