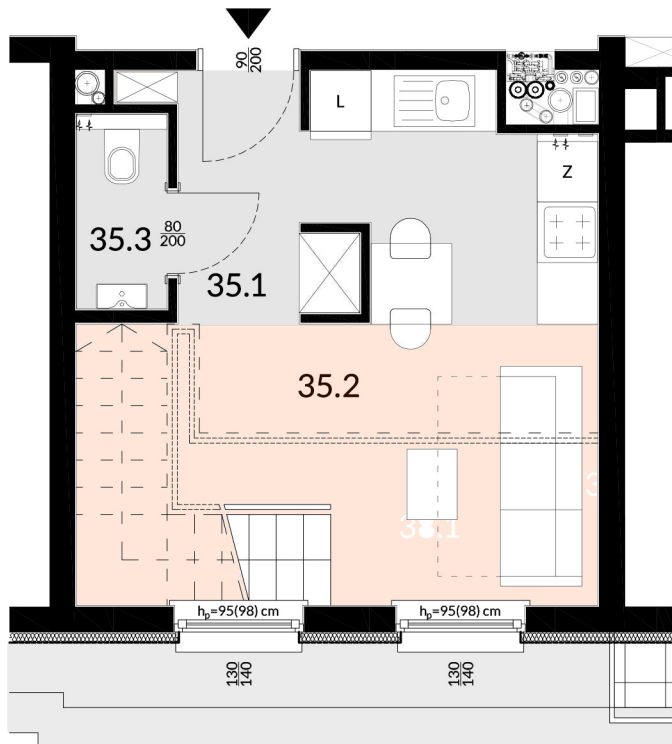
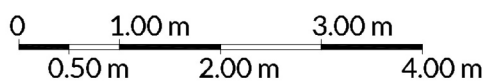
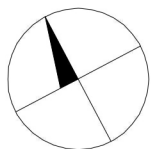
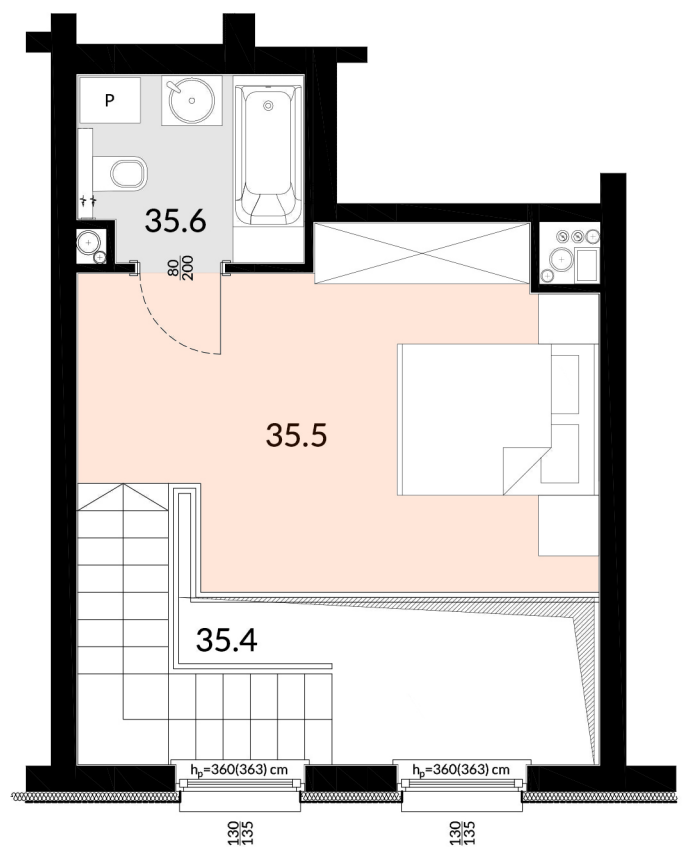


### POZIOM 0



### POZIOM I (+ 2,78 m)



## MIESZKANIE NR 35

### dwupoziomowe

#### ZESTAWIENIE POWIERZCHNI UŻYTKOWEJ

35.1	Hall	3,69 m <sup>2</sup>
35.2	Salon z aneksem kuchennym	16,97 m <sup>2</sup>
35.3	WC	1,74 m <sup>2</sup>
35.4	Schody	3,97 m <sup>2</sup>
35.5	Sypialnia	15,95 m <sup>2</sup>
35.6	Łazienka 1	4,00 m <sup>2</sup>
<b>SUMA</b>		<b>46,32 m<sup>2</sup></b>

### VI PIĘTRO

