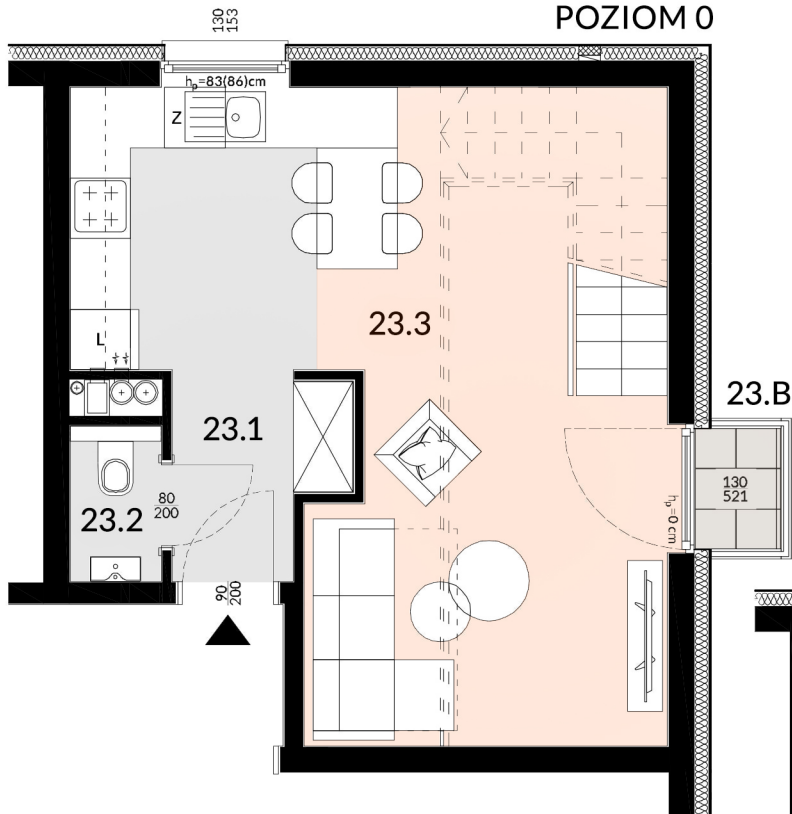
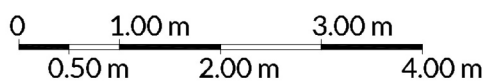
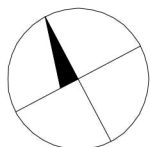
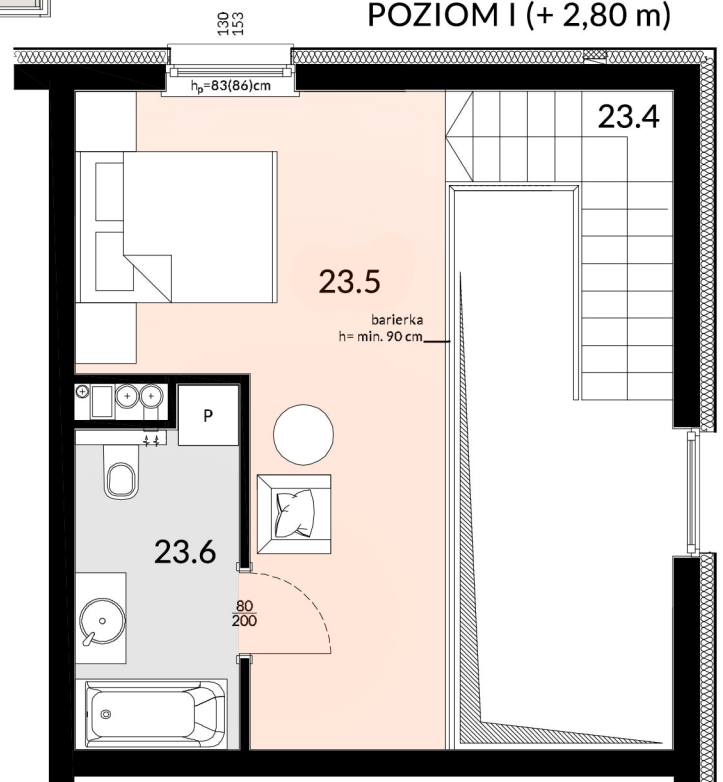


POZIOM 0



POZIOM I (+ 2,80 m)



MIESZKANIE NR 23

dwupoziomowe

ZESTAWIENIE POWIERZCHNI UŻYTKOWEJ

23.1	Hall	3,19 m ²
23.2	WC	1,39 m ²
23.3	Salon z aneksem kuchennym	26,04 m ²
23.4	Schody	3,97 m ²
23.5	Sypialnia	17,51 m ²
23.6	Łazienka	5,41 m ²
SUMA		57,51 m²
23.B	Balkon	0,88 m ²

IV PIĘTRO

